



# funky friends factory

Toys and Dolls you'll LOVE to make & make to LOVE!



## Kawaii Kuties **Kawaii CAT** © 2014

**Finished Size: 12" / 31cm (tall)**

These cute little Kawaii Animal Dolls were inspired by my recent trip to Japan. Their over-sized heads and large eyes create the typical kawaii face. This easy pattern makes a perfect first sewing project for a beginner because they are QUICK and FUN to make. They are great for using up your fabric stash and make cute baby toys too!



Facebook  
<http://www.facebook.com/funkyfriendsfactory>



Instant Download Pattern Shop  
<http://www.funkyfriendsfactory.com/>



Etsy Shop  
<http://www.etsy.com/shop/FunkyFriendsFactory>



Toy-making Blog  
<http://www.funkyfriendsfactory.com/blog/>

# funky friends factory

P O Box 814, Aspley 4034,  
Queensland, Australia.  
www.funkyfriendsfactory.com

## Kawaii Kuties Funky Kawaii CAT © 2013

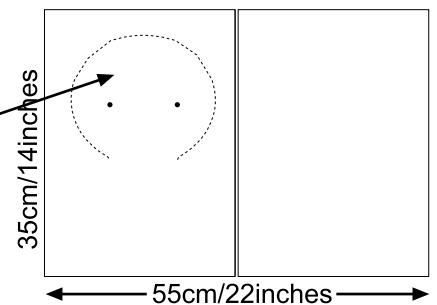
## RECOMMENDED FABRICS

Homespun/cotton fabric for the MAIN PIECE and EARS.  
Felt was used for the face features and clothes.

## LAYOUT DIAGRAM

For ALL of the Kawaii Kuties you will trace the pattern piece onto the RIGHT SIDE of the fabric first. (This is so you can sew the face BEFORE you sew the body together.)

HOMESPUN / COTTON FABRIC



## STEP 1 - GATHER YOUR MATERIALS

Specific Requirements :

- Homespun /cotton fabric - 35cm x 55cm wide / 14x12inches wide.
- Fabric scraps for ears.
- Felt scraps for face pieces.
- Black embroidery thread for face.

General Requirements :

- General sewing supplies (thread, pins, needles,scissors, etc).
- Craft glue & firm card for templates.
- Fine tipped permanent marker pen.
- Toy stuffing.





## STEP 2

- Glue the pattern pages onto card or thick paper. (Recycled cereal boxes are great for this too.)
- Cut out the pattern pieces to make your templates.
- Use glue or sticky tape to join the 2 parts of the **MAIN PIECE**.



## STEP 3

- Fold the **MAIN PIECE** along the middle and cut out the **NOSE** shape.

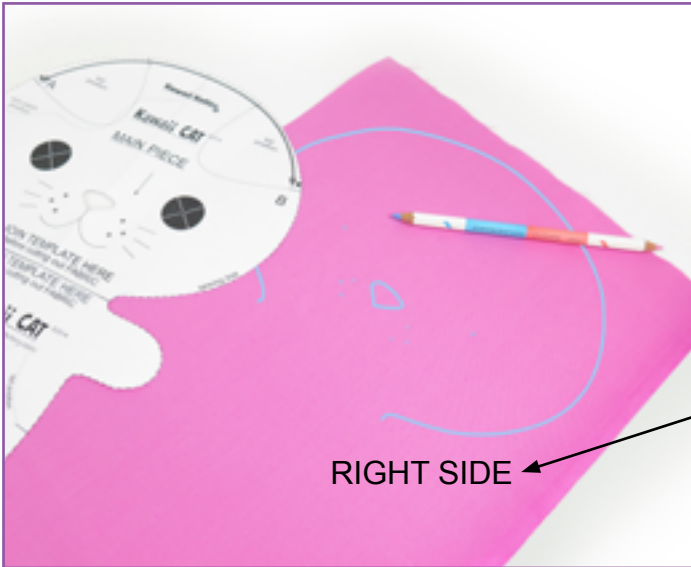
This is so you can trace the **NOSE** onto the fabric.



## STEP 4

- Use a pencil to make holes at the centre of each eye, and at each whisker dot, so you can transfer these marks to the fabric.

**TIP:** If you are using a light coloured fabric you might be able to see the pattern markings through the fabric so you can trace the face through the fabric!



## STEP 5

- ❑ Lay the fabric on the table **RIGHT SIDE UP**.
- ❑ Place the **MAIN PIECE** template onto the right side of the fabric and trace the head and nose and whisker dots, with a fabric marker or pencil.

It is very important to trace on the **RIGHT** side

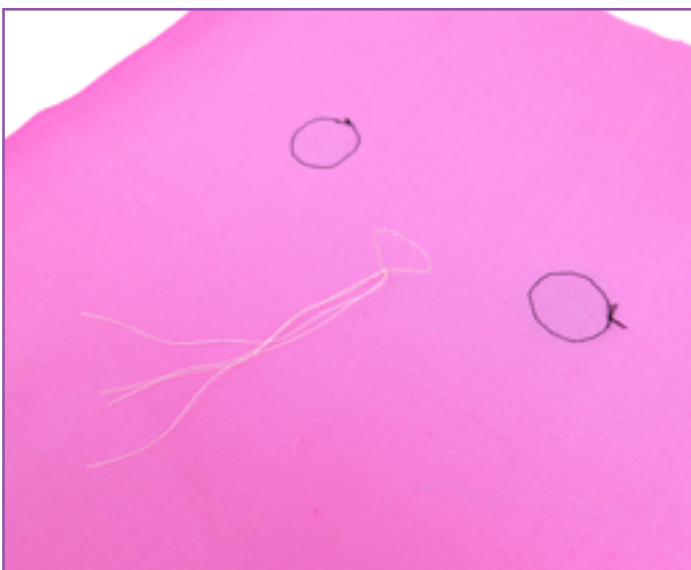
RIGHT SIDE



## STEP 6

- ❑ Cut out a **NOSE**, an **EYE PATCH** and 2 **EYE PIECES** from felt and pin these over the face markings.

**TIP:** Make sure that you place the felt of the **EYE PATCH** so that it overlaps the sewing line by 6mm/ ¼inch. This is so that the felt will be caught in the seam when you sew the Kutie's body together.

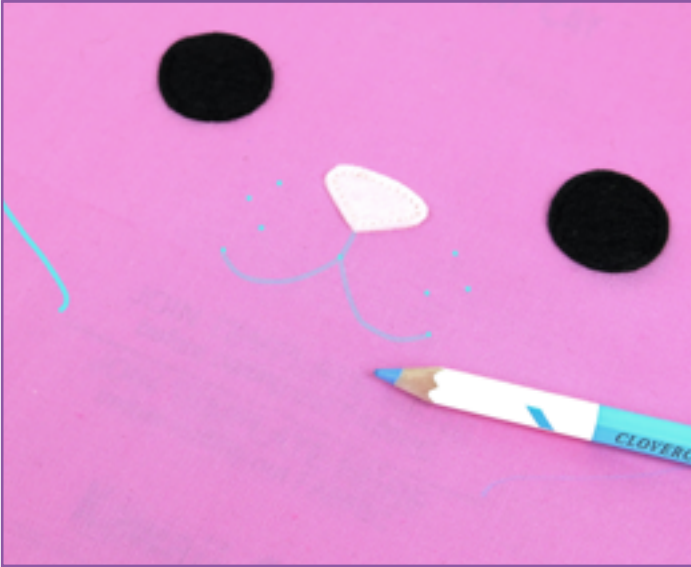


## STEP 7

- ❑ Sew the felt pieces in place. I like to do this by machine as it is much quicker, but you can sew them on with embroidery thread if you like.

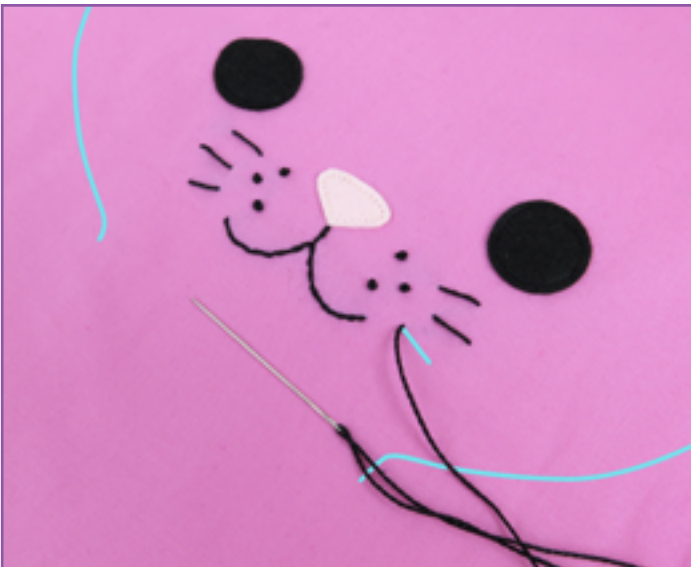
**TIP:** If you sew with a machine, pull your threads to the back of the fabric and tie these together before you snip them off. It looks neat and the stitching won't come undone with lots of toy-squeezing!!!





## STEP 8

- Use the pencil to make 3 holes on the **MAIN PIECE** for the mouth.
- Transfer these marks to the fabric and join the dots to draw the mouth.



## STEP 9

- Embroider the mouth and spots with black embroidery thread (I used perle embroidery thread).
- Transfer and sew the whisker lines in the same way.

**TIP:** I used a back stitch for the mouth and French knots for the spots.



## STEP 10

- Turn the fabric over so that it is now **WRONG SIDE UP**.
- Place the **MAIN PIECE** template onto the wrong side of the fabric.
- Line up the gap you cut for the **SNOUT PIECE** with the stitching holding the felt **SNOUT PIECE** in place!

**TIP:** If your face is a bit crooked - line up the nose as accurately as you can! (We are all slightly crooked!)



## STEP 11

- ❑ Trace right around the outside of the **MAIN PIECE** and transfer the pattern markings for the **TAIL** and **EAR** positions and stuffing gap.
- ❑ Place the piece of fabric with your face sewn on it, on top of another piece the same size with **RIGHT SIDES TOGETHER**.
- ❑ Sew around the **MAIN PIECE** but leave the stuffing gap, the tail gap and the top of the head open, between A and B.



## STEP 12

- ❑ Cut out your Kutie, all the way around, with a 5mm/ ¼ inch seam-allowance.

**TIP:** Seam allowance is a sewing term - it simply means you cut out your Kutie, along an imaginary line 5mm (¼ inch) outside the sewing line! (I find a smaller seam allowance will fray easily and the toy can split open. A bigger seam allowance makes the toy hard to turn right sides out.)



## STEP 13

- ❑ Trace and sew the **EARS** in pairs, sewing on the traced line.
- ❑ Cut the ears out with a 5mm /¼inch seam-allowance. Turn the ears (press if you like) and pin them closed.
- ❑ Do the **TAIL** in the same way!



## STEP 14

- Pin the **EARS** in place, as shown in the photo.



## STEP 15

- Pin the head closed at the top
- Sew the head closed from A - B, with the **EARS** in between the 2 **MAIN PIECES**.
- Clip the fabric around the curves. Be very careful NOT to cut through the stitches.

**TIP:** This is very important so the seams will turn out easily!



## STEP 16

- Push the **TAIL** into the tail gap and pin the **TAIL** in between the **MAIN PIECES**.
- Sew the **TAIL** in place.



## STEP 17

- Turn your Kutie right side out. I use a wooden chop stick to turn my toys but you can also use the end of a child's paint brush!

**TIP:** Always turn the smallest bits first! Push the legs and arms into the body, then push the top of the head out through the turning gap.



## STEP 18

- Use a wooden chopstick to make sure the seams are turned nicely.

**TIP:** Run the chopstick back and forth along along the stitch line, right around the body, until all the seams are smooth.



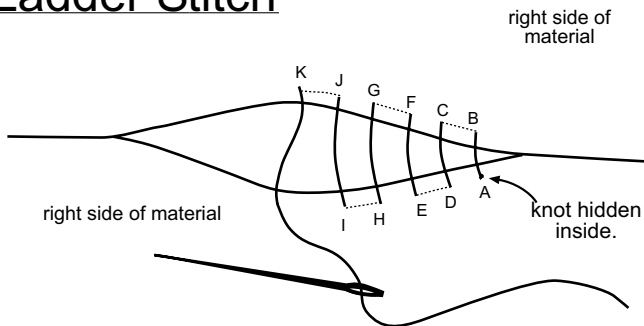
## STEP 19

- Stuff the head starting at the top.
- When the head is firm, stuff the legs and arms. Go back and stuff the neck firmly then finish by filling the body.

**TIP:** Kuties take a lot more stuffing than you'd think! You may have a crease at the arms and neck but keep stuffing firmly to remove the wrinkles, especially at the front.



## Ladder Stitch



Copyright © 2001 Funky Friends Factory.  
©© 070630 Copyright Protection Services International.

## STEP 20

- Sew the stuffing gap closed using a ladder stitch.

**TIP:** Use a double strand of machine thread and make your stitches as small as you can to make it nice and neat!

*Your Kawaii Kutie is ready to love!*



## NEW TO TOY MAKING?

Check out my Learn to Sew Toys page for heaps of tip, tricks and photo tutorials.

<http://www.funkyfriendsfactory.com/learn-to-sew-toys>



## COPYRIGHT INFORMATION

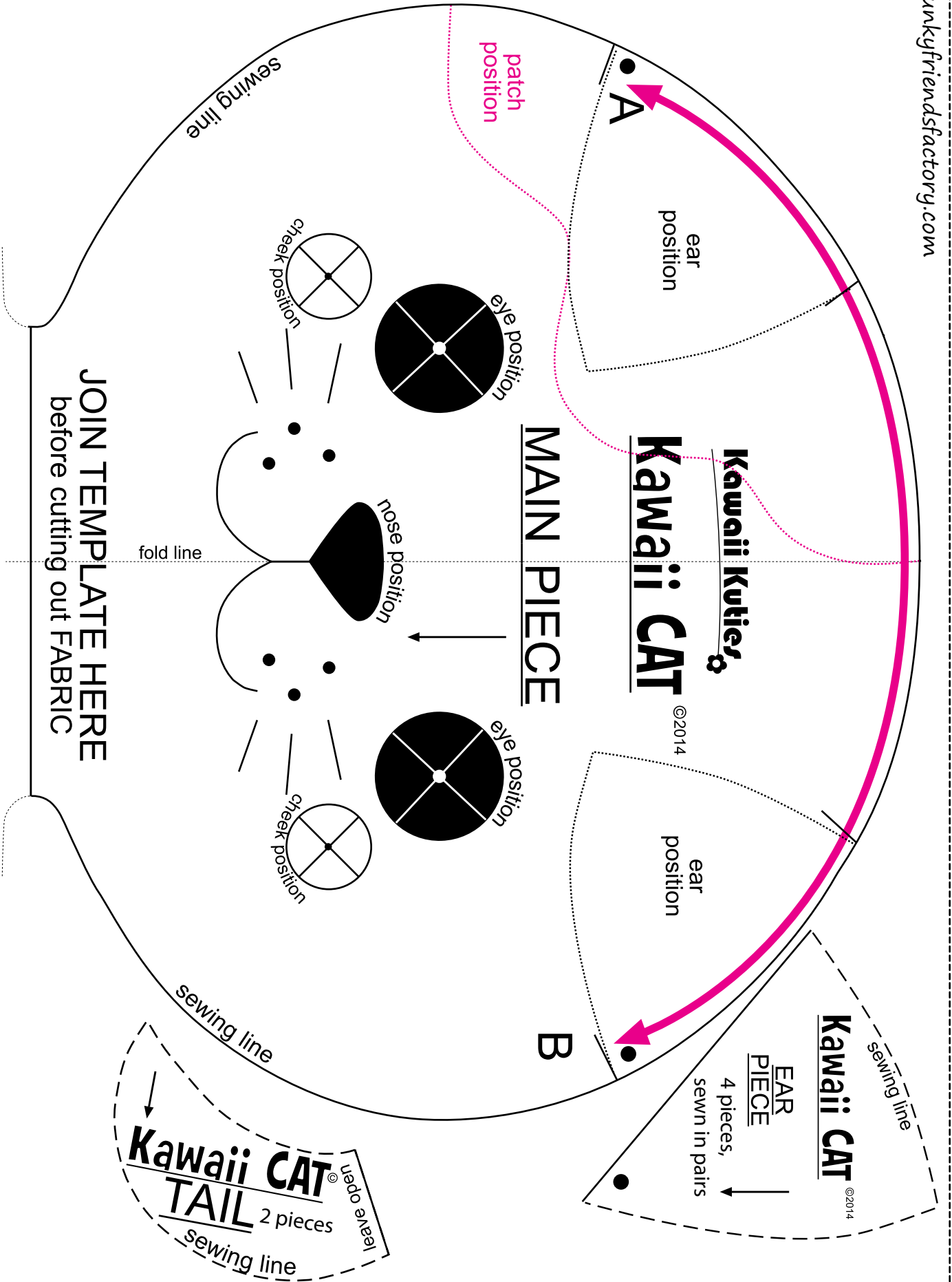
I get great pleasure knowing that other people like me can use my Funky Friends Factory doll and toy patterns at home to make some money with their sewing talents!

AND... I am quite happy for people to sell the toys that they make from my pattern designs as long as they follow the Copyright Guidelines. If you want to make Funky Friends toys to sell ~ please visit my website to find out how we can work together, to help YOU make some money and help ME to keep doing what I love to do... **make MORE patterns for YOU!**

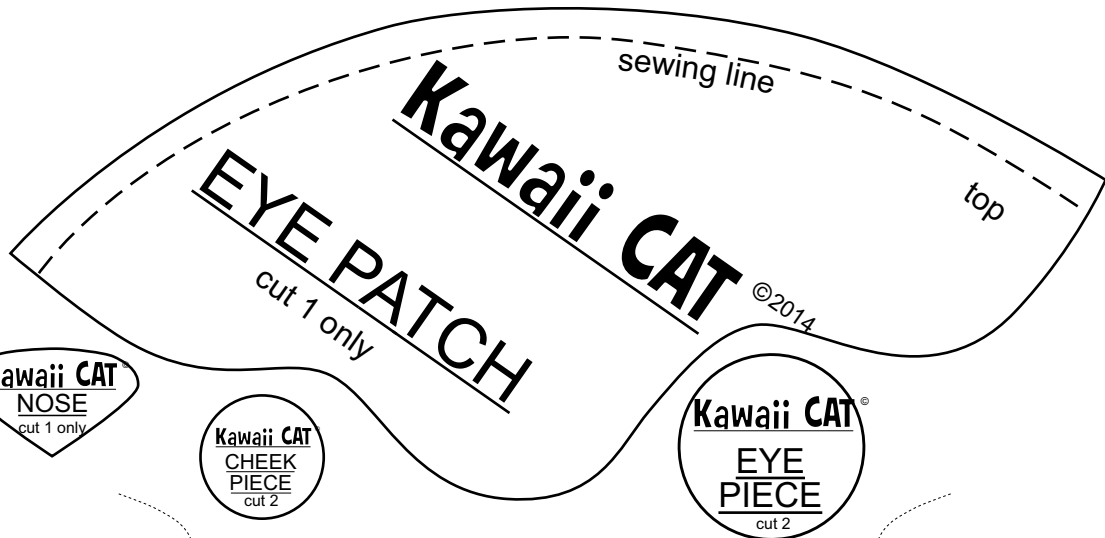
<http://www.funkyfriendsfactory.com/sell-funky-friends-factory-toys/>

*I have faith that you will respect the long hours and creative energy that have gone into producing the Funky Friends Factory patterns.*

*Thank you, Pauline*



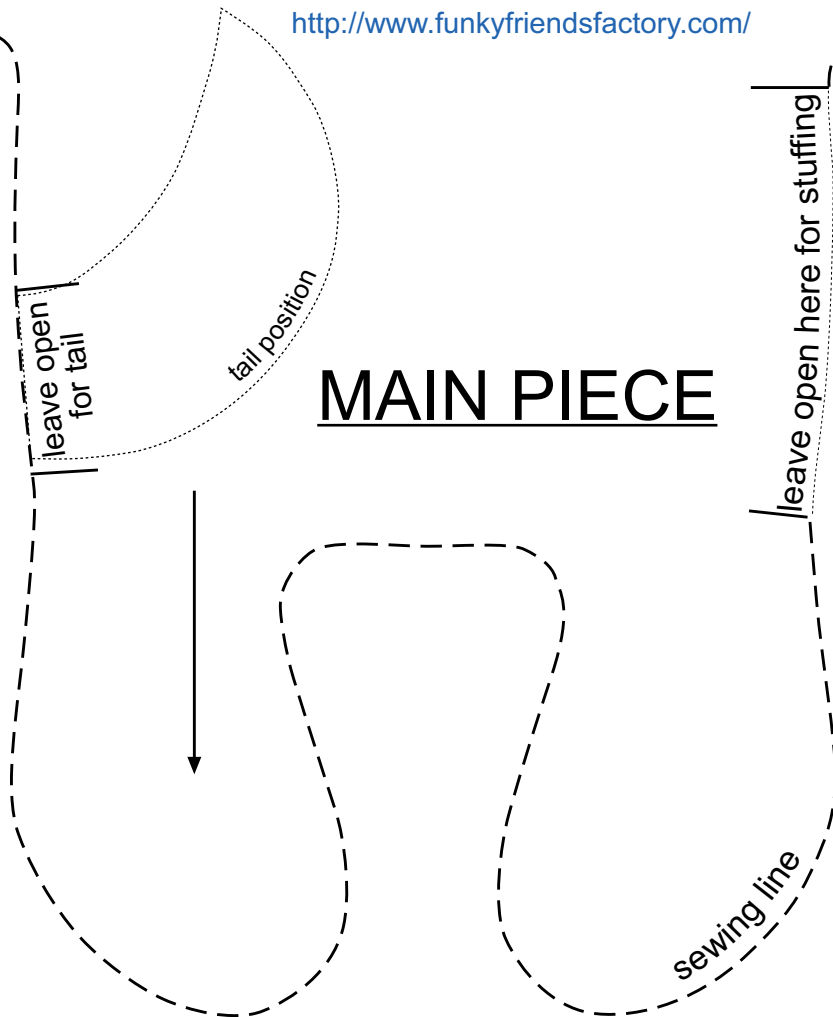
JOIN TEMPLATE HERE  
before cutting out FABRIC

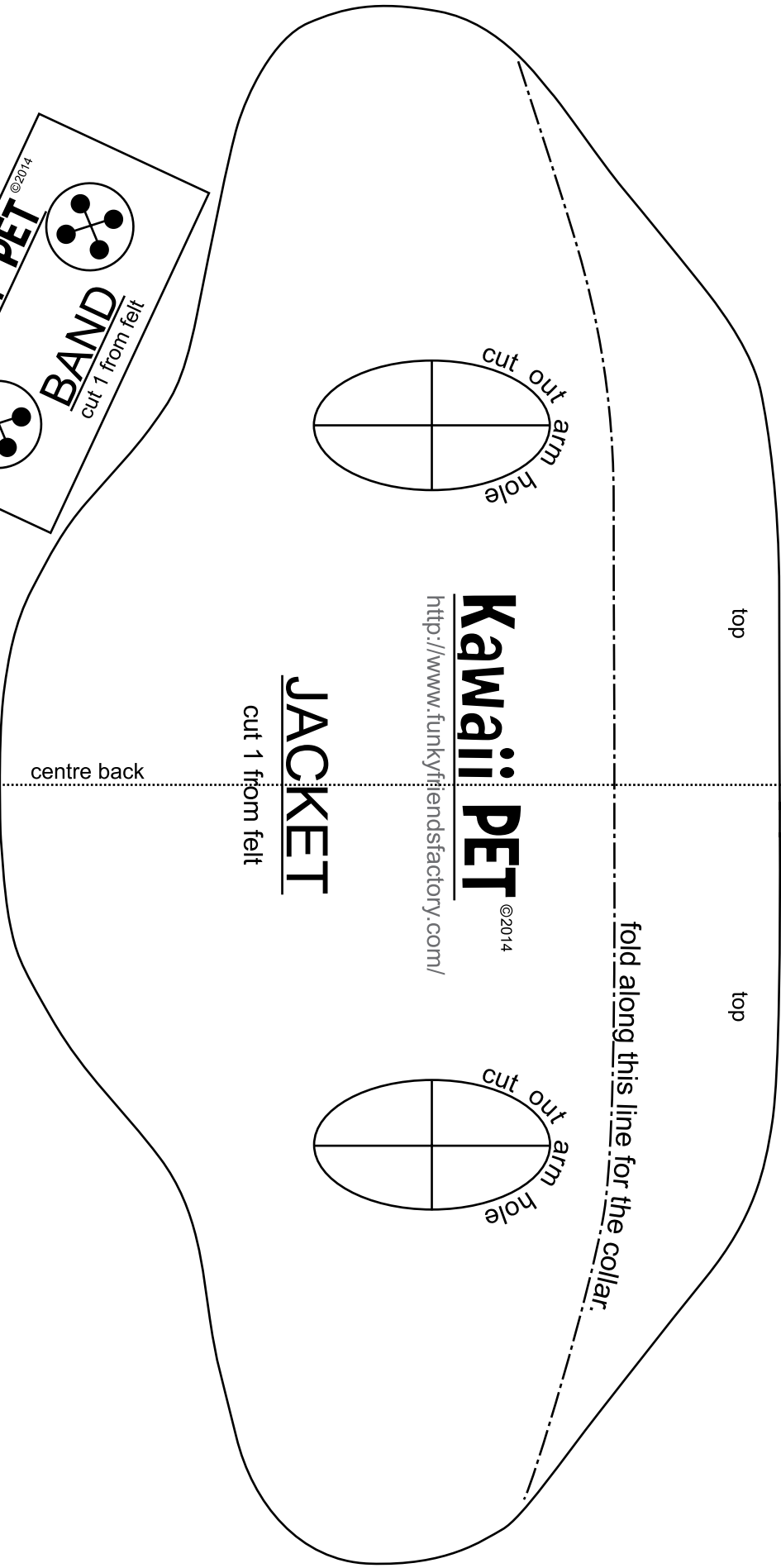
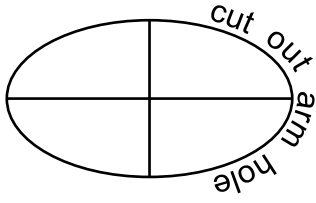
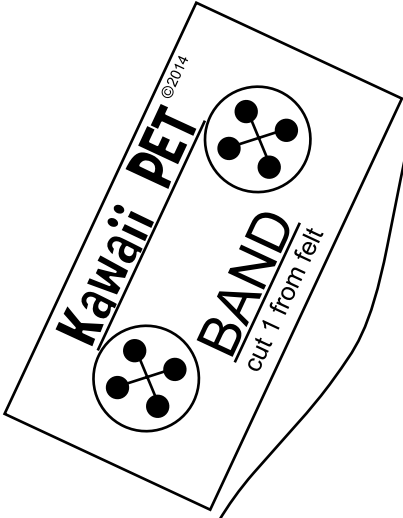


JOIN TEMPLATE HERE  
before cutting out FABRIC

**Kawaii CAT** ©2014

<http://www.funkyfriendsfactory.com/>







# Kawaii Kuties Pet Jacket Pattern

© 2013



This pet jacket will fit ALL of the Kawaii Kuties!

It's been so cold here in Brisbane, while I've been designing my Kawaii Pets, we're ACTUALLY having a winter for a change.

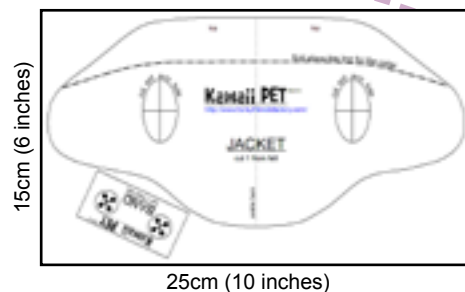
My real pets have been feeling the cold and last night was so cold I was thinking I really should buy them (design them?) some jackets!

AND that got me thinking... and I just HAD to design a jacket for my Kawaii Kuties! :)

## LAYOUT DIAGRAM

The jacket can be made from wool felt or synthetic felt.

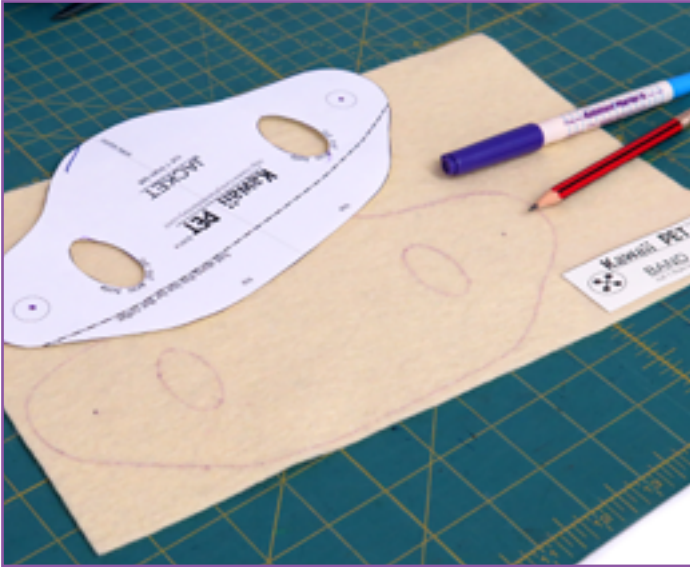
**TIP:** I have a blog post with pros and cons of both to help you decide which to use - <http://www.funkyfriendsfactory.com/blog/wool-felt-or-acrylic-which-is-better/>



## STEP I - GATHER YOUR MATERIALS

- Felt 15x25cm / 6x10inches wide.
- 2 buttons 12-24mm (1/2 - 1inch)
- General sewing supplies (thread, needles,scissors, etc).
- Fabric marker.

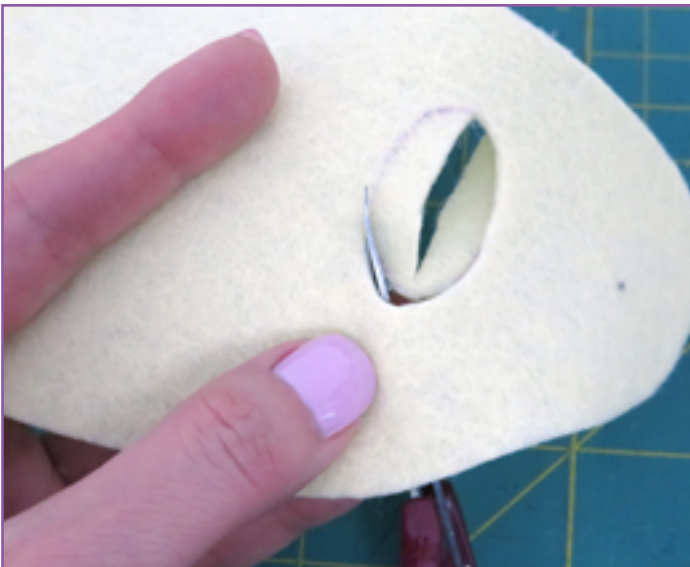




## STEP 1

- Trace the **JACKET** and **BAND PIECE** onto the felt.

**TIP:** I used an air-erasable fabric marker for this so it wouldn't leave marks on the pale yellow felt ~>  
<http://www.funkyfriendsfactory.com/products/supplies/fabric-marker-purple-air-erasable-pen>



## STEP 2

- Cut a slit in the felt and cut out the felt ovals for the arm holes.



## STEP 3

- Put the **JACKET PIECE** onto your Kutie and fold the collar down and pin it in place.



## STEP 4

- Pin the **BAND PIECE** in place.
- Check that the **BAND** is straight and the **JACKET** is fitting nicely, then mark the positions for the buttons.



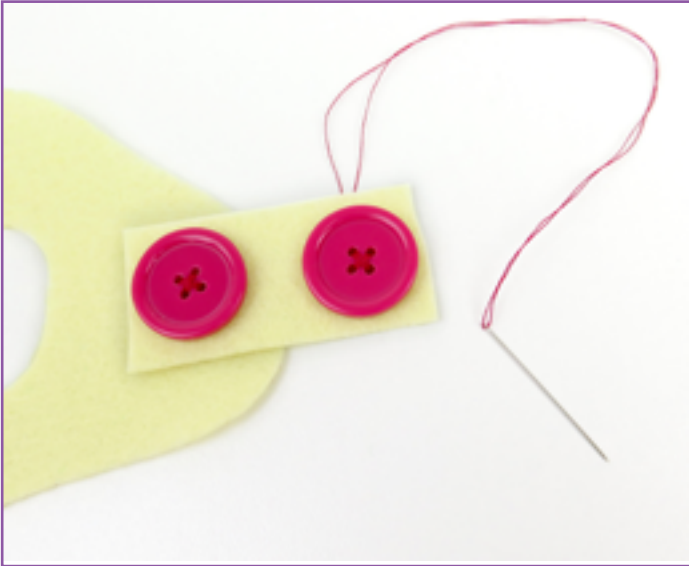
## STEP 5

- Unpin the pieces on one side and take the **JACKET** off.
- Sew one of the buttons in place, sewing through both layers (the **BAND** and the **JACKET PIECES**).



## STEP 6

- Put the **JACKET** back on to check the fitting and mark the position for the velcro.



## STEP 7

- Sew the second button onto the **BAND**.



## STEP 8

- Use velcro or snap fasteners on the **BAND PIECE** just behind the second button and on the **JACKET PIECE** for fastening the **JACKET** closed.
- Put your cute pet jacket on your DOG!

*Have fun dressing your Kuties!*

## Come and join the fun on Facebook

I LOVE to see how your Funky Friends Factory toys turn out ~> Show them off by posting a photo on my Funky Friends Factory Facebook page and YOU could win a FREE PATTERN!



<http://www.funkyfriendsfactory.com/blog/make-my-monday-pattern-giveaway-on-facebook/>

